

CONSILIUL JUDETEAN  
BRAILA  
PRESEDINTE  
DIRECTIA GENERALA DE ASISTENTA SOCIALA  
SI PROTECTIA COPILULUI BRAILA  
COLEGIUL DIRECTOR

TOTAL POSTURI 765  
FUNCTII PUBLICE 61  
- de conducere 6  
- de executie 55  
FUNCTII CONTRACTUALE 704  
- de conducere 14  
- de executie 690

Area N. 1  
la H.C. Braila  
Nr. 251  
29.03.2016

Comisia Judeteana pentru  
Protectia Copilului

**DIRECTOR GENERAL**

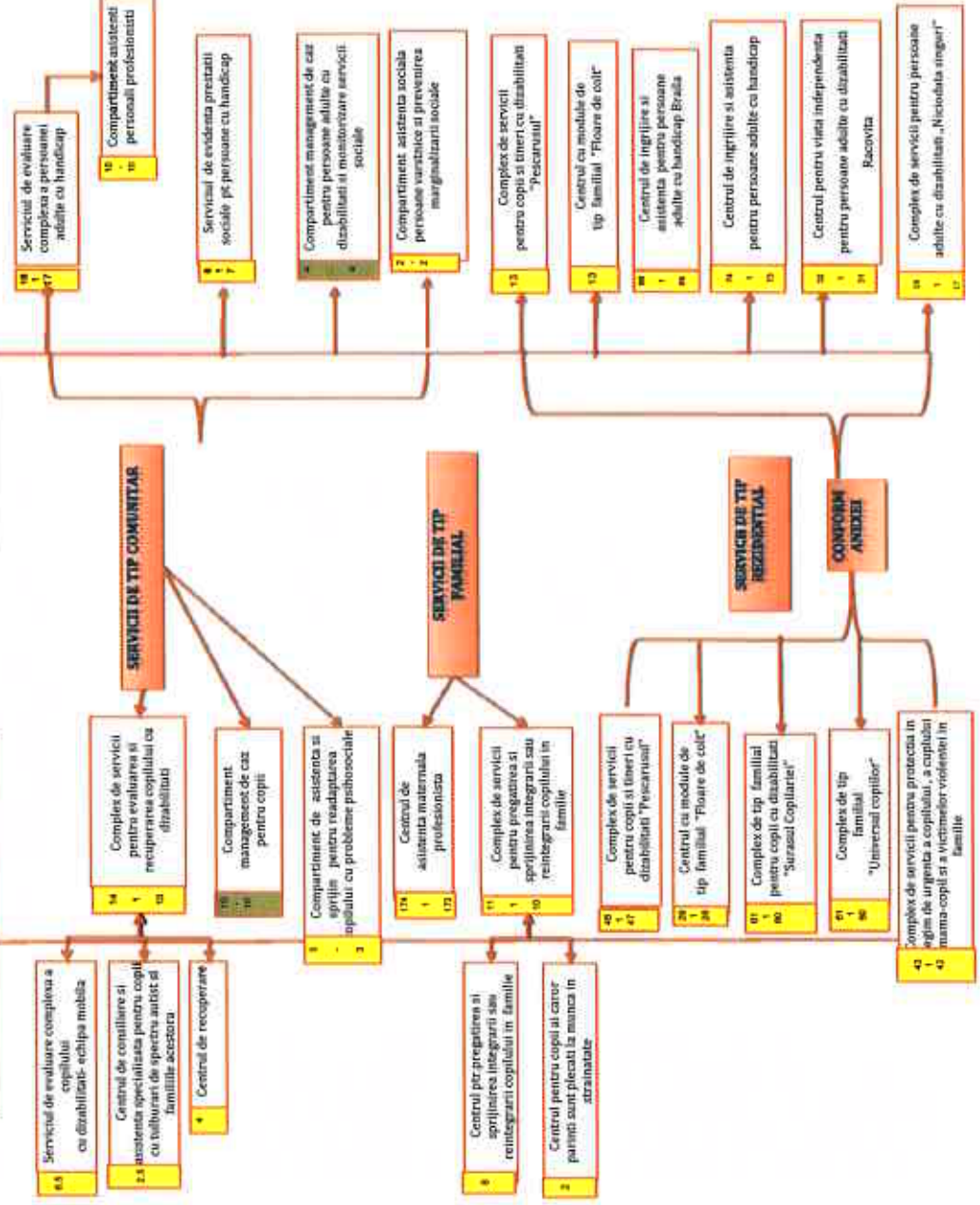
DIRECTOR GENERAL ADJUNCT

DIRECTOR GENERAL ADJUNCT

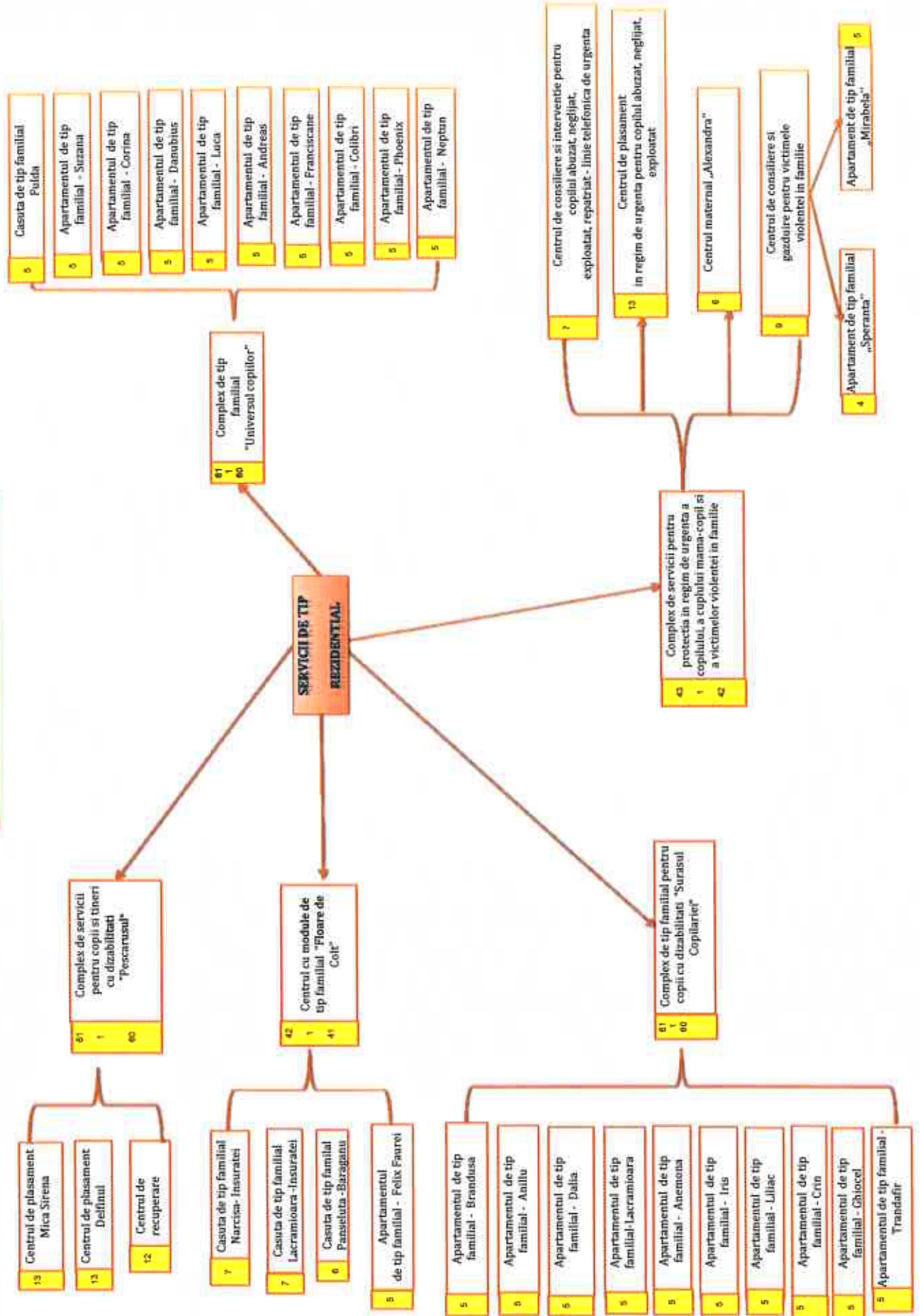
**PROTECTIA COPILULUI**

**PROTECTIA PERSOANEI  
ADULTE CU DIZABILITATI**

**APARAT PROPRIU**

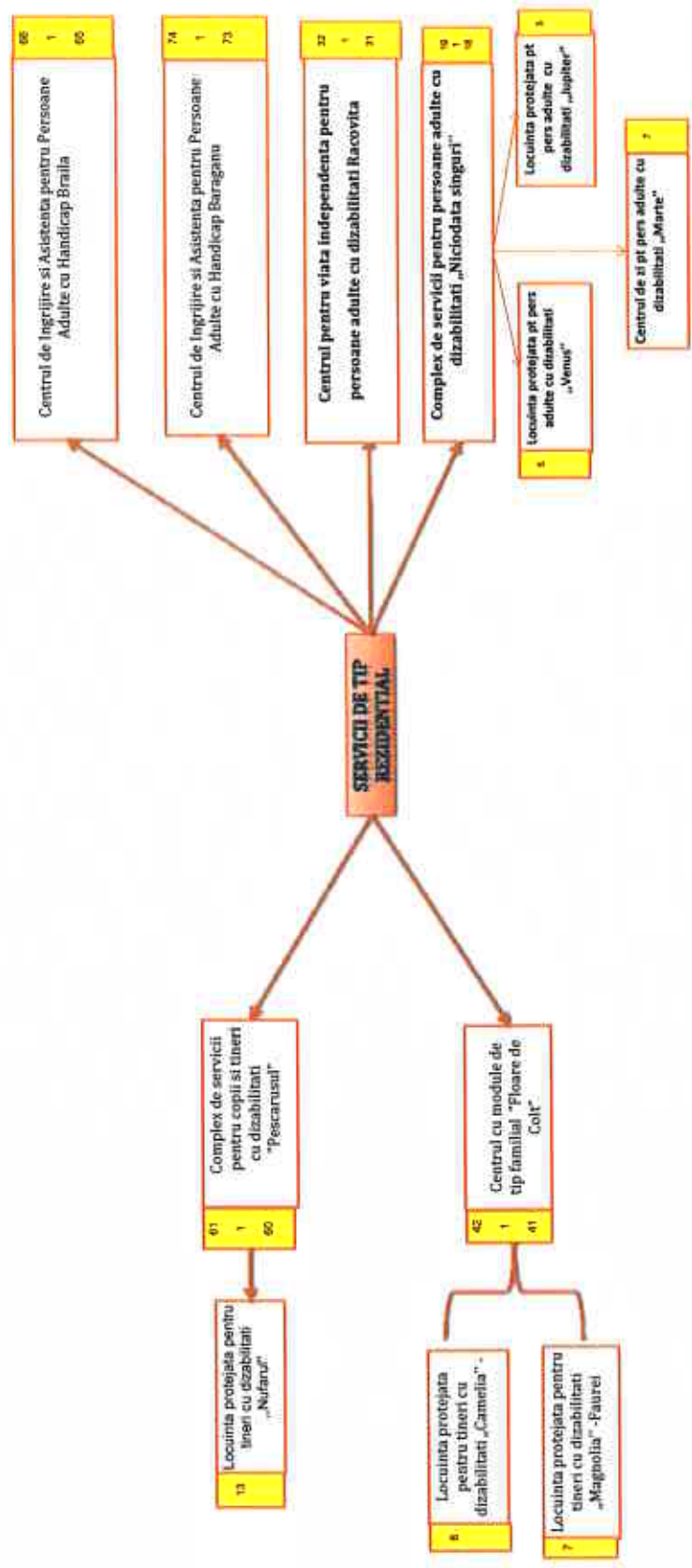


PROTECTIA COPILULUI



**DIRECTOR GENERAL ADJUNCT**

**PROTECTIA PERSOANEI ADULTE CU DIZABILITATI**





## STAT DE FUNCTII

Directia Generala de Asistenta Sociala si Protectia Copilului Braila

ANEXA nr.2 la  
 HCJ Braila nr.25/29.03.201

NR. CRT.	Numele, prenumele/VACANT, temporar VACANT dupa caz	STRUCTURA	Funcția de demnitate publică	Funcția publică			Clasa	Gradul profesional	Nivelul studiilor	Funcția contractuală		Nivelul studiilor	Observatii
				Inalt functionar public	de conducere*	de executie				de conducere	de executie		
1	Cimpoae Simona Daniela				director general		I	II	S				
2	Eftimie Iulian Catalin				director general adjunct		I	II	S				
3	VACANT				director general adjunct		I	II	S				
	<b>Serviciul planificare bugetara, management financiar si contabilitate</b>												
4	Simion Adrian Toni				sef serviciu (14.01.2019 - 13.07.2019)		I	II	S				
	<b>Compartiment planificare bugetara</b>												
5	VACANT					consilier	I	superior	S				
6	Chirpac Ionica Daniela					consilier	I	superior	S				
7	Gheorghiu Florin					Inspector	I	superior	S				
8	Caraivan Marioara Cristina					Inspector	I	principal	S				
	<b>Compartiment contabilitate</b>												
9	Avramescu Ionica					Inspector	I	superior	S				
10	Pintilie Georgeta					Inspector	I	superior	S				
11	Moldoveanu Teodora					Inspector	I	superior	S				
12	Mihai Gabriela					Inspector	I	superior	S				
13	Parlea Ioana					Inspector	I	superior	S				
14	Serghei Gloria Constanta					Inspector	I	superior	S				
15	Gheorghita Mihaela					Inspector	I	principal	S				
16	Burlacu Ana Maria					Inspector	I	principal	S				















172	Tarau Mihaela Camelia									asistent maternal			M
173	Tomosoiu Aurora Ileana									profesionist asistent maternal			M
174	Tudorascu Paula									profesionist			M
175	Tudorancea Angelica									profesionist			M
176	Tudose Eugenia Smaranda									profesionist			M
177	Vlad Anisoara									asistent maternal			M
178	Zaharia Lucica									profesionist			M
179	Dobre Simona									asistent maternal			M
180	Odagiu Ionica									profesionist			M
181	Bacanu Lucica									asistent maternal			M
182	Pirlea Nicoleta Ionelia									profesionist			M
183-2	VACANT - 83 POSTURI									asistent maternal profesionist			M
<b>Complex de servicii pentru pregatirea si sprijinirea integrarii sau reintegrarii copilului in familie</b>													
266	Biteanu Andia									coordonator personal de specialitate		II	S
<b>Centrul pentru pregatirea si sprijinirea integrarii sau reintegrarii copilului in familie</b>													
267	Costescu Antonela Crina									psiholog		principal	S
268	Budur Stoiana									asistent social		principal	S
269	Cioloan Claudia Mariana									asistent social		principal	S
270	Cringasu Aura									asistent social		principal	S
271	Dragnea Luminita Mihaela									asistent social		principal	S
272	Grigoras Violeta									asistent social		principal	S
273	Miu Mariana Luminita									asistent social		principal	S
274	Pavel Ana Maria									asistent social		principal	S
<b>Centrul pentru copii ai caror parinti sunt plecati la munca in strainatate</b>													
275	Silaghe Catalina Mirela									asistent social		principal	S
276	VACANT									psihopedagog		principal	S







330	VACANT																		instructor de educatie			M
331	VACANT																		infirmier			G
332	Sava Fanuta																		infirmier			G
333	Stanciu Gabriel Marius																		infirmier			G
334	Cana Rodica																		infirmier			G
335	Badiu Dan																		infirmier			G
336	Simion Marcela																		infirmier			G
337	VACANT																		infirmier			G
	<b>Centrul cu module de tip familial "Floare de Colt"</b>																					
338	Mihaila Tudorita																			Sef centru	II	S
	<b>Echipe multidisciplinare</b>																					
339	VACANT																		psiholog		principal	S
340	VACANT																		asistent social		principal	S
341	VACANT																		asistent social		principal	S
	<b>Casuta de tip familial „Narcisa” - Insuratei</b>																					
342	Ciocoi Geta																		instructor de educatie			M
343	Ivan Lenuta																		instructor de educatie			M
344	Marin Aurelia Tatiana																		instructor de educatie			M
345	Bounegru Adela																		instructor de educatie			M
346	Lipan Ionel																		administrator			M
347	Englifer Tudorita																		infirmier			G
348	Dutu Ioana																		infirmier			G
	<b>Casuta de tip familial „Lacramioara” - Insuratei</b>																					
349	VACANT																		asistent medical		principal	PL
350	Preda Steluta Bona																		instructor de educatie			M
351	Moldoveanu Mariana																		instructor de educatie			M
352	Bitca Voica Violeta																		instructor de educatie			M
353	VACANT																		instructor de educatie			M
354	Gorgan Doinita																		infirmier			G





















548	VACANT												inspector de specialitate		S
549	Vasile Marius Aurelian												medic	specialist	S
550	Anghel Mihaela												psiholog	principal	S
551	Ciobotaru Mariana												asistent social	principal	S
552	VACANT												kinetoterapeut	principal	S
<b>Compartimentul asistenti personali profesionisti</b>															
553	VACANT (10 posturi)												asistent personal profesionist		M
<b>Serviciul de evidenta prestatii sociale pentru persoane cu handicap</b>															
563	Andreescu Geta											Sef serviciu		II	S
564	Vacant												inspector de specialitate		S
565	Ercuta Alice												inspector de specialitate		S
566	Olteanu Liliana												inspector de specialitate		S
567	Chirita Viorela												inspector de specialitate		S
568	Stefan Florentina Daniela												referent		M
569	David Doina												referent		M
570	Moldovan Ionel												ingrijitor		G
<b>Compartiment management de caz pentru persoane adulte cu dizabilitati si monitorizare servicii sociale</b>															
571	VACANT												Inspector	I	principal
572	VACANT												Inspector	I	principal
573	VACANT												Inspector	I	asistent
574	VACANT												Inspector	I	asistent
<b>Compartiment asistenta sociala persoane varstnice si prevenirea marginalizarii sociale</b>															
575	VACANT												asistent social	principal	S
576	VACANT												asistent social	specialist	S
<b>Centrul de ingrijire si asistenta pentru persoane adulte cu handicap Braila</b>															
577	Gheorghe Cristina													II	S
578	VACANT												medic	specialist	S
579	Mosescu Ecaterina												psiholog	principal	S

580	VACANT																			asistent social		principal	S
581	VACANT																			kinetoterapeut			S
582	Capitaneanu Adriana																			instructor de ergoterapie			M
583	Cochirleanu Dumitru																			instructor de ergoterapie			M
584	Fodor Georgeta																			instructor de ergoterapie			M
585	VACANT																			instructor de ergoterapie			M
586	VACANT																			instructor de ergoterapie			M
587	VACANT																			instructor de ergoterapie			M
588	VACANT																			instructor de ergoterapie			M
589	VACANT																			instructor de ergoterapie			M
590	Negrut Vasilica																			asistent medical		principal	PL
591	Dinu Elisabeta																			asistent medical		principal	PL
592	Vasile Aurelia																			asistent medical		principal	PL
593	Mocanu Daniela																			asistent medical		principal	PL
594	Năstase Loredana Elena																			asistent medical		principal	PL
595	Stoianof Ionica																			asistent medical		principal	PL
596	Iosef Gabriel																			asistent medical - fizioterapie			PL
597	VACANT																			asistent medical		principal	PL
598	VACANT																			masor			M
599	VACANT																			infirmier			G
600	Calin Iulia Stanuta																			infirmier			G
601	Popa Ana																			infirmier			G
602	Vasile Georgeta																			infirmier			G
603	Vasile Hilda																			infirmier			G
604	Anton Fanica																			infirmier			G
605	Dragu Mioara																			infirmier			G
606	Crisbasanu Didy Florina																			infirmier			G
607	Bădilă Florentina																			infirmier			G
608	Batrinu Chirina																			infirmier			G
609	VACANT																			infirmier			G
610	Bucsa Ionel																			infirmier			G











